

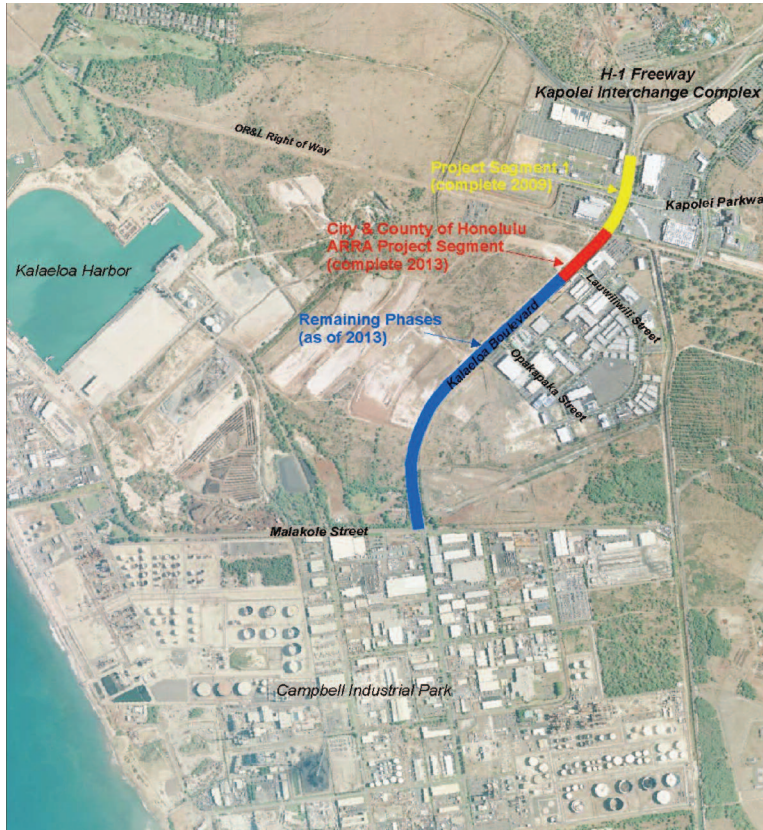
Kalaeloa Boulevard Improvement Planned

Aina Nui Corporation to fund the \$30 million project

With the recent sale of 122 industrial acres fronting Kalaeloa Boulevard, James Campbell Company's affiliate Aina Nui Corporation is moving forward to complete the final phase of the redevelopment of Kalaeloa Boulevard between Lauwiliwili Street and Malakole Street. The project will be funded by Aina Nui and is estimated to cost approximately \$30 million.

The first two phases of the project included improvements to Kalaeloa Boulevard between H-1 Freeway and Lauwiliwili Street. The phases were funded by Aina Nui (\$8 million) and the City and County of Honolulu (\$7 million).

Kalaeloa Boulevard was first constructed in the 1950s to serve the James Campbell Industrial Park (JCIP), O'ahu's only heavy industrial park. Today, it is the primary access road between H-1 Freeway and JCIP, where more than 200 businesses and nearly 4,000 people provide a significant portion of the island's infrastructure. It is also the only access road to H-POWER, the Kalaeloa – Barbers Point Harbor, and the island's only oil refineries, and will eventually improve access to the Kalaeloa Redevelopment Area. With the planned growth of Kapolei's industrial center, the



current four-lane roadway will be widened to accommodate the heavy flow of daily traffic into and out of the area.

The improvement will widen the roadway from four to six lanes with traffic signals at all the major cross streets serving

Kapolei Business Park and Avalon Development Company's upcoming Kapolei Business Park West. Work on Kalaeloa Boulevard will start in early 2015 with an expected completion in 2016.

"This improvement will alleviate traffic congestion and promote



"This improvement will alleviate traffic congestion and promote commerce within two of the State's major economic centers..."

commerce within two of the State's major economic centers — Campbell Industrial Park and Kalaeloa Harbor," said Steve Kelly, Aina Nui's vice president of development. "Providing improved access to these economic centers will not only ease traffic flow, but will enhance safety in the event of industrial emergencies. As Kapolei continues to develop into a major job center, the pattern of commuter and commercial traffic will change, reversing the regional flow of traffic across O'ahu."

Kelly said that during construction, traffic flow on the roadway will be managed to minimize disruptions as much as possible.

See's Candies Coming to Kapolei Shopping Center

Grand Opening set for October 10

Nearly everyone is familiar with the smiling face of the spectacled, silver haired woman on the candy boxes sold in the trademark black and

white shops named See's Candies. Mary See was the inspiration for her son Charles See's fledgling company that he founded in 1921 in Los Angeles, CA. Not only did

he use her recipes as a foundation, but he also felt that no image would better reflect the personality of his company — lovingly crafted chocolates made from scratch using the finest, freshest ingredients with no added preservatives.

The Kapolei shop will be the fifth See's Candies in Hawaii, and will serve more than 100 varieties of candy, including boxed chocolates, truffles, nuts and chews, and lollipops. At the candy counter, chocoholics can create custom boxes of assorted chocolates and candies.

This iconic candy emporium will open on Friday, October 10 at the Kapolei Shopping Center with a ribbon cutting at 9:30 a.m. On that day, kids will get free lollipops and hats.



For those who miss the grand opening, not to worry. See's will continue its tradition of giving guests a free piece of chocolate each time they visit the store. See's Candies gives away more than one million pounds of candy every year.

